

St. Paul, Minneapolis and Duluth  
— TO —  
**WINNIPEG OR BISMARCK.**

Through Express Train  
**TIME CARD**

WEST.	Miles.	STATIONS.	EAST.
6.20 p.m.	0	Lv. St. Paul..... Ar.	7.55 a.m.
7.00 "	10	Lv. Minneapolis..... Ar.	7.35 "
7.57 "	27	" Anoka..... "	6.38 "
10.10 "	76	Lv. Sauk Rapids..... Lv.	4.25 a.m.
5.00 p.m.	0	Lv. Duluth..... Ar.	10.30 a.m.
6.30 "	23	" Thompson..... "	9.05 "
6.35 "	24	" N. P. Junction..... "	9.00 "
8.05 "	46	" S. Island Lake..... B.	7.45 "
10.32 "	88	" Aiken..... "	5.22 "
11.10 "	98	" Withington..... "	4.55 "
12.30 a.m.	115	Ar. Brainerd..... Lv.	1.30 a.m. † 4.10 a.m.
1.15 a.m. †	136	Lv. Brainerd..... Ar.	1.15 a.m.
3.50 "	183	" Wadena..... "	10.56 p.m.
4.58 "	207	" Perham..... "	9.50 "
6.00 "	228	" Detroit..... "	8.50 "
7.40 "	265	" Glyndon..... "	6.43 "
8.05 a.m.		Lv. Glyndon..... Ar.	9.10 p.m.
12.05 p.m.		" Crookston..... Lv.	5.25 "
2.05 "		Ar. Grand Forks..... "	3.00 "
4.45 "		" St. Vincent..... "	12.30 p.m.
8.00 "		Ar. St. Boniface..... Lv.	† 8.00 a.m.
Ar. 8.00 a.m.	8.00 "	274 Lv. Moorhead..... "	6.20 "
8.05 "	8.30 "	275 " B. Fargo..... S. Lv.	6.15 "
	9.10 "	288 " Mapleton..... "	5.10 "
	9.30 "	293 " Dalrymple..... "	4.50 "
	9.35 "	295 " Casselton..... "	4.43 "
	9.57 "	302 " Wheatland..... "	4.20 "
	10.28 "	312 " New Buffalo..... "	3.47 "
	10.50 "	318 " Tower City..... "	3.25 "
	11.02 "	322 " Fourth Siding..... "	3.15 "
	11.40 "	333 " Valley City..... "	2.35 "
	12.05 p.m.	341 " Sixth Siding..... "	2.09 "
	346 " Sanborn..... "		
	12.32 "	348 " Eckelson..... "	1.45 "
	1.10 "	358 " Spiritwood..... "	1.10 "
	2.05 "	368 Lv. D. Jamestown..... D. Lv.	12.25 p.m.
	2.28 "	376 " Burton..... "	11.39 a.m.
	3.03 "	387 " Alton..... "	11.09 "
	3.36 "	396 " Midway..... "	10.42 "
	4.05 "	405 " Crystal Springs..... "	10.19 "
	4.50 "	414 " Troy Farm..... "	
	5.12 "	426 " 13th Siding..... "	9.40 "
	5.31 "	433 " 14th Siding..... "	9.20 "
	6.05 "	443 " 15th Siding..... "	8.55 "
	6.38 "	445 " 16th Siding..... "	8.10 "
	7.15 p.m.	456 " Clarke..... "	7.40 "
		469 Ar. Bismarck..... Lv.	† 7.10 a.m.

MANITOBA AND DULUTH EXPRESS.

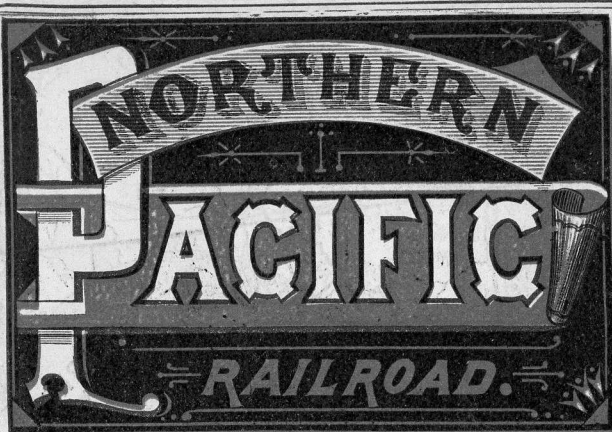
MANITOBA AND DULUTH EXPRESS.

\* Daily, ex. Saturday. † Daily, ex. Sunday. ‡ Daily, ex. Monday.  
D. Dinner. B. Breakfast. S. Supper.

**BISMARCK to MONTANA**  
And All Points on Yellowstone and Missouri Rivers.

During Season of Navigation of 1880,  
TRI-WEEKLY STEAMERS leave Bismarck for Forts Berthold, Buford and Benton; Powder, Tongue, Yellowstone and Upper Missouri Rivers; Big Horn City, Bozeman, Helena, and the Big Horn Mountains.

The Line is completed and in operation to a point 61 miles west of Bismarck. Passengers will be carried to "end of track" as fast as road is in shape for trains.



**THE SHORTEST, QUICKEST**  
— AND —  
**ONLY DIRECT ROUTE**  
TO ALL POINTS IN THE  
**NEW NORTHWEST!**

**MANITOBA.**  
This is the only route running in connection with the  
**GREAT LAKE ROUTE**  
— TO —  
**WINNIPEG**  
And all Points in Manitoba.

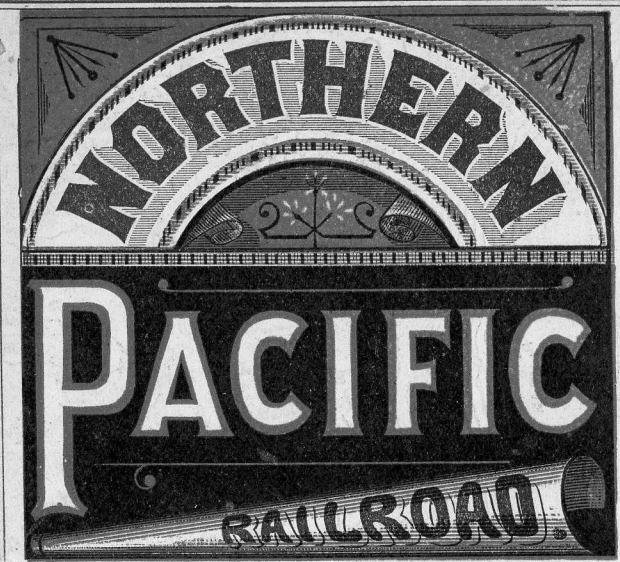
Close connections are made at **DULUTH**, with all  
**American & Canadian Lines of Steamers**  
— FROM —  
**BUFFALO, ERIE, DETROIT,**  
**SARNIA, ONT. COLLINGWOOD & CHICAGO.**

On sale at all Principal Stations a life of **EAST-BOUND** TICKETS via this Favorite Route.

**REMEMBER THE ABOVE AND PURCHASE TICKETS Over No Other Line.**

For further information, apply to or address

G. G. SANBORN, Gen'l Frt & Pass. Ag't. N. P. R. R.,  
St. Paul, Minn.  
Or L. P. HILLIARD, Agent, 54 Clark Street, Chicago.  
**W. C. ANDRUS,**  
General Eastern Passenger Agent, 285 Broadway, NEW YORK.



AND ITS CONNECTIONS.

— THE —  
**FORT KEOGH & MILES CITY**  
MAIL AND STAGE LINES,  
— OR —  
**Missouri and Yellowstone River Steamers**  
— FOR —

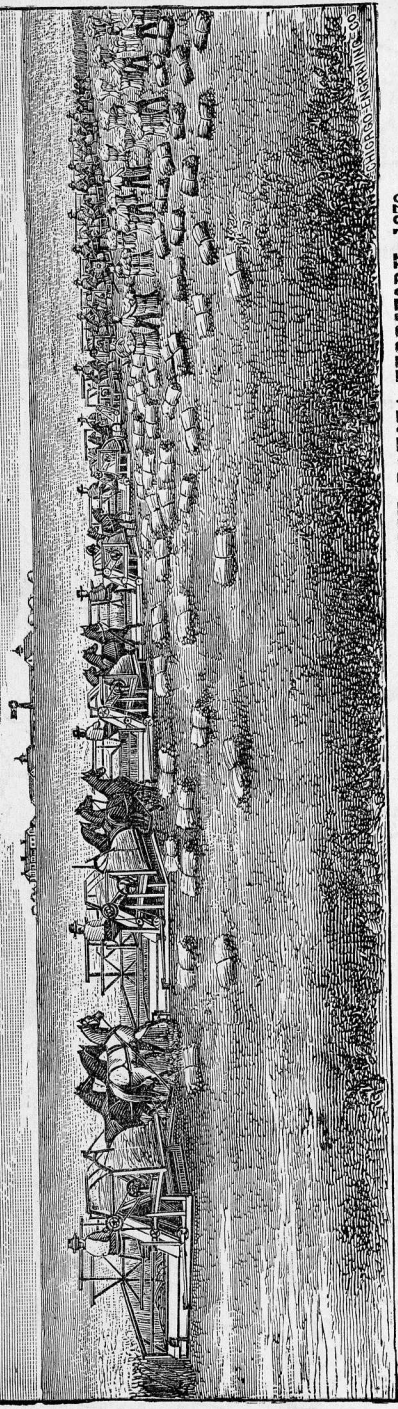
**DAKOTA & MONTANA**

**HELENA, FT. BENTON,**  
**FT. ASSINABOINE, FT. CUSTER,**  
**MILES CITY, FT. KEOGH,**  
**BISMARCK, JAMESTOWN,**  
**FARGO, GLYNDON,**  
**DETROIT, BRAINERD**  
And all Points in the

**NEW NORTHWEST**  
During Season of 1880.

**H. E. SARGENT,** General Manager.  
**G. G. SANBORN,** Gen'l Frt. and Pass. Agt.  
**H. A. TOWNE,** Superintendent.  
**J. M. HANNAFORD,** Ass't Gen'l Frt. & Pass. Agt.  
**ST. PAUL, MINN.**





**HARVESTING ON THE GREAT CASS-CHENEY FARM, CASS COUNTY, DAKOTA TERRITORY, 1879.**

This farm has been opened three years. Each year new land is broken. This season 8,170 acres were cultivated, producing 189,823 bushels of wheat, 15,877 bushels of oats, 6,649 bushels of barley. The wheat cost less than 40 cents per bushel to raise, and sold for 95 cents. The stock and implements used consisted of 158 mules, 81 wagons, 32 gang plows, 55 harvesters, 9 separators, 40 seeders and 104 harrows. There are thousands of acres of just as good land remaining. For all information, Illustrated Paper and Maps, apply to

**JAMES B. POWER, Land Commissioner N. P. R. R.**

St. Paul or Brainerd, Minn., or 54 Clark Street, Chicago, Ill.

# MANITOBA

— AND THE —

## GOLDEN NORTHWEST

— VIA THE —

### Great Lakes and Northern Pacific R. R.

*If you are going to Manitoba, Northern Dakota, or the Red River Valley, and desire to go via the Cheapest, Most Comfortable and Delightful Route, see that your tickets read via the Great Lakes and Duluth.*

**Take either of these Popular Routes from the East:**

- THE NORTH WEST TRANSPORTATION CO.,** from Sarnia, Ont., in connection with the Grand Trunk and Great Western R'ys.
- THE LAKE SUPERIOR TRANSIT CO.,** from Buffalo, Erie, Cleveland, Detroit or Port Huron.
- THE COLLINGWOOD LINE,** from Collingwood, Ont., in connection with the Northern R'y of Canada, from Toronto.
- THE LAKE MICHIGAN AND LAKE SUPERIOR TRANS. CO.,** from Chicago and Milwaukee.

The Steamers of these Lines are noted for their Speed, Safety, Comfort and Elegance. The Best Boats on the Lakes are those running into Lake Superior, and all connect with the Northern Pacific R. R. at Duluth.

**YOU AVOID TWO DAYS OF DUSTY, TEDIOUS RAIL TRAVEL.**

**A DAILY THROUGH EXPRESS TRAIN** from DULUTH, with Sleeping Coaches attached takes you forward to destination. We make close connection at Glynndon with the St. Paul & Manitoba Road, for Winnipeg, and all points in Manitoba.

**ALL BAGGAGE TRANSFERRED FREE AT DULUTH.**

**THIS IS THE FAVORITE ROUTE FOR TOURISTS AND EMIGRANTS.**

East Bound Tickets via these Routes on sale at Winnipeg, and all principal Stations.

# TIME CARD.

## ST. PAUL, MINNEAPOLIS & FARGO

### Two Express Trains Daily.

## 1880. SUMMER ARRANGEMENT. 1880.

**WESTWARD.**

NEW YORK.....Lv.	10.30 a.m.	8.30 p.m.	6.00 p.m.	11 00 p.m.
BOSTON....."	8.20 a.m.	6.00 p.m.	3.00 p.m.	
ALBANY....."	3.10 p.m.	1.50 a.m.	10.25 p.m.	7.30 a.m.
BUFFALO....."	12.35 a.m.	12.45 p.m.	8 10 a.m.	
PHILADELPHIA....."	11.50 a.m.	11.55 p.m.	9.10 p.m.	
MONTREAL....."	9.30 a.m.	10.00 p.m.		
TORONTO....."	11.45 p.m.	12.15 no'n		
DETROIT....."	9.35 a.m.	9.50 p.m.	8.10 p.m.	7.00 a.m.
CHICAGO.....Ar.	7.40 p.m.	8.30 a.m.	7.30 a.m.	6.50 p.m.
CHICAGO, C. M. & St. P.....Lv.	10.10 a.m.	9.00 p.m.		
CHICAGO, C. & N-W....."			10.10 a.m.	9.00 p.m.
ST. PAUL.....Ar.	6.00 a.m.	1.25 p.m.	6.00 a.m.	1.30 p.m.

WEST.		Miles.	STATIONS.		EAST.		
* 6.20 p.m.	+ 7.00 a.m.	0	Lv. ....	St. Paul	Ar.	6.40 p.m.	7.55 a.m.
7.00 "	7.40 "	10	"	Minneapolis	"	6.30 "	7.35 "
7.57 "	8.37 "	27	"	Anoka	"	5.23 "	6.38 "
8.15 "	8.55 "	34	"	Itaska	"	5.06 "	6.20 "
8.30 "	9.10 "	39	"	Elk River	"	4.52 "	6.05 "
8.55 "	9.35 "	48	"	Big Lake	"	4.25 "	5.40 "
9.17 "	9.57 "	56	"	Becker	"	4.03 "	5.18 "
9.37 "	10.16 "	63	"	Clear Lake	"	3.44 "	4.58 "
10.05 "	10.45 "	74	"	East St. Cloud	"	3.15 "	4.30 "
10.10 "	10.50 "	76	"	Sauk Rapids	"	3.10 p.m.	4.15 a.m.
10.45 "	11.22 "	88	"	Rice's	"	2.37 "	3.40 "
11.05 "	11.37 "	95	"	Royalton	"	2.30 "	3.32 "
11.32 "	12.03 p.m.	105	"	Little Falls	"	1.55 "	2.54 "
11.45 "	12.15 "	110	"	Belle Prairie	"	1.45 "	2.41 "
12.10 a.m.	12.39 "	120	"	Fort Ripley	"	1.22 "	2.15 "
+ 1.15 "	+ 1.45 "	136	Lv.	Brainerd	Lv.	+ 12.40 p.m.	1.30 a.m.
		143	"	Gull River	"		
2.25 "	2.45 "	158	"	Motley	"	11.20 a.m.	12.13 ngt
3.10 "	3.40 "	172	"	Aldrich	"	10.43 "	11.32 p.m.
3.24 "	3.50 "	176	"	Vermdale	"	10.30 "	11.20 "
3.50 "	4.10 "	183	"	Wadena	"	10.11 "	10.56 "
4.05 "	4.23 "	189	"	Bluffton	"	9.57 "	10.40 "
4.30 "	4.45 "	196	"	New York Mills	"	9.35 "	10.21 "
4.58 "	5.11 "	207	"	Perham	"	9.07 "	9.50 "
5.30 "	5.38 "	218	"	Frazee City	"	8.37 "	9.20 "
6.00 "	6.15 "	228	"	Detroit	"	8.10 "	8.50 "
6.19 "	6.35 "	235	"	Andubon	"	7.50 "	8.30 "
6.35 "	\$ 7.10 "	241	Lv.	Lake Park	Ar.	7.37 "	8.13 "
7.05 "	7.40 "	252	"	Hawley	"	7.05 "	7.40 "
7.18 "	7.52 "	256	"	Muskoda	"	6.50 "	7.20 "
7.40 "	8.20 "	265	"	Glynndon	"	6.25 "	6.43 "
8.00 "	8.42 "	274	"	Moorhead	"	6.05 "	6.20 "
8.05 a.m.	8.45 p.m.	275	Ar.	Fargo	Lv.	+ 6.00 a.m.	+ 6.15 p.m.

+ Daily, except Sunday. \* Daily, except Saturday.  
 † Dinner. ‡ Supper.

**Daily Line of Stages (except Monday) from Fargo to Grand Forks, and intermediate Points.**  
 Passengers holding Emigrant Tickets carried on same trains as first-class passengers, and in clean, warm cars.  
 We check 150 pounds of Baggage on every full fare Ticket.

**UNION DEPOT, FOOT SIBLEY STREET, ST. PAUL**



A FEW

# REASONS WHY

Travelers should take the

## Northern Pacific Railroad

TO ALL

### POINTS IN THE NORTHWEST.

- 1st.—It takes you through the best Wheat Fields known to the world.
- 2d.—It is the only Line running Two Express Trains daily into Dakota and the Great Northwest.
- 3d.—It crosses the Missouri River 613 miles further north than any other Line, at a point above the low bottoms, uninteresting scenery, and endless sand bars—and Passengers taking Steamer at Bismarck for Ft. Benton, Helena, and the Yellowstone River, avoid the perils of navigation on the lower Missouri River, making two or three weeks better time than by the lower routes.
- 4th.—Its Passenger Trains are equipped with the WESTINGHOUSE AIR BRAKE and MILLER PLATFORM—and with its Steel Rail, travel is made absolutely safe.
- 5th.—It is the only Line from St. Paul making direct DAILY connection with STAGES for FORT KEOGH, MILES CITY, and all points in the Yellowstone Valley.
- 6th.—It is the only Line running to BRAINERD, DETROIT, MOORHEAD in Minnesota, and FARGO, CASSELTOWN, WHEATLAND, VALLEY CITY, JAMESTOWN and BISMARCK, and Points in NORTHERN DAKOTA west of the Missouri River.
- 7th.—It has FIRST CLASS EATING HOUSES at Brainerd, Fargo, Jamestown and Bismarck, and meals are furnished at USUAL RATES charged on Eastern Roads.

## PALACE SLEEPING COACHES

Operated by the Company on all Night Trains.

SEE THAT YOUR TICKETS READ VIA THE

# Northern Pacific!

DO NOT ACCEPT OTHERS.

# THE GOLDEN NORTHWEST.

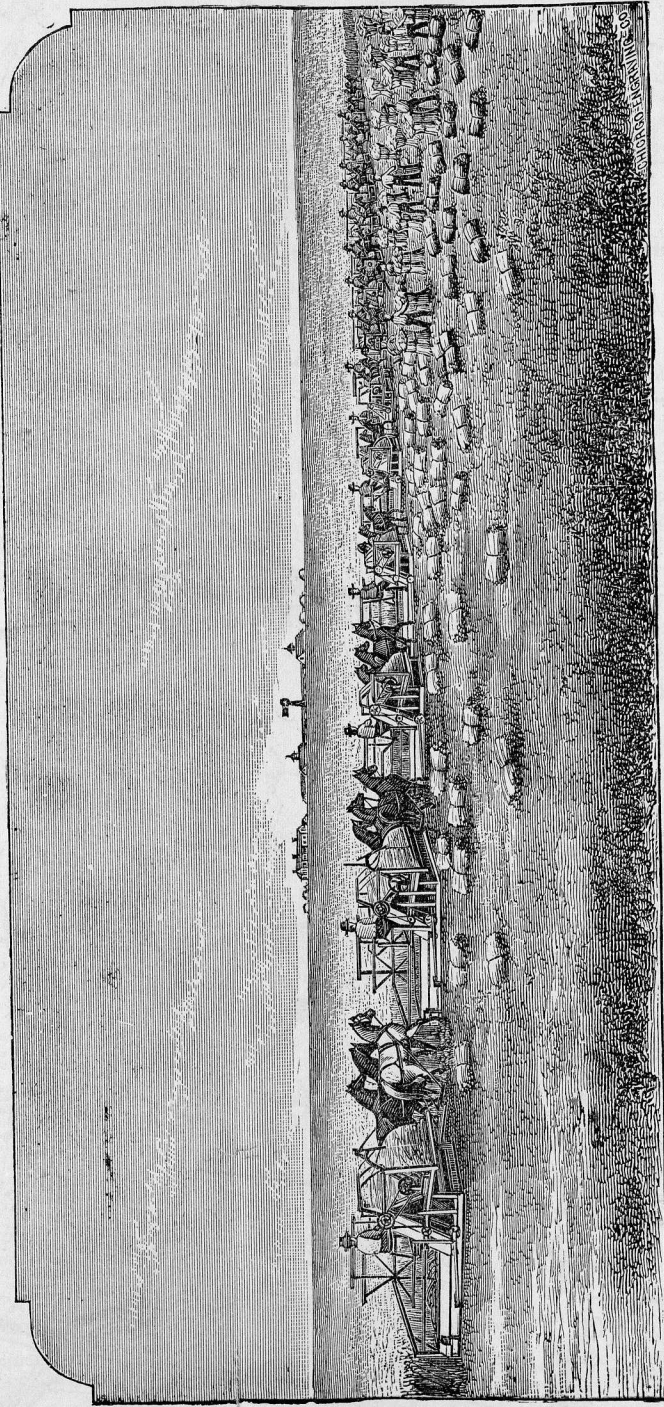
50,000 Fertile Farms! 6,000,000 Splendid Acres!

PRAIRIE LANDS!—MEADOW LANDS!—TIMBER LANDS!

In Minnesota and Dakota, at \$2.50 per Acre and Upward.

# BEST WHEAT LAND IN THE WORLD!

Best Land in America for Diversified Farming and Stock Raising. An abundance of Fuel and Water. Near to Markets. Special Inducements for Settlers.



HARVESTING ON THE GREAT CASS-CHENEY FARM, CASS COUNTY, DAKOTA TERRITORY, 1879.

This farm has been opened three years. Each year new land is broken. This season 8,170 acres were cultivated, producing 189,823 bushels of wheat, 15,877 bushels of oats, 6,649 bushels of barley. The wheat cost less than 40 cents per bushel to raise, and sold for 95 cents. The stock and implements used consisted of 158 mules, 81 wagons, 32 gang plows, 55 harvesters, 9 separators, 40 seeders and 104 harrows. There are thousands of acres of just as good land remaining. For all information, Illustrated Paper and Maps, apply to

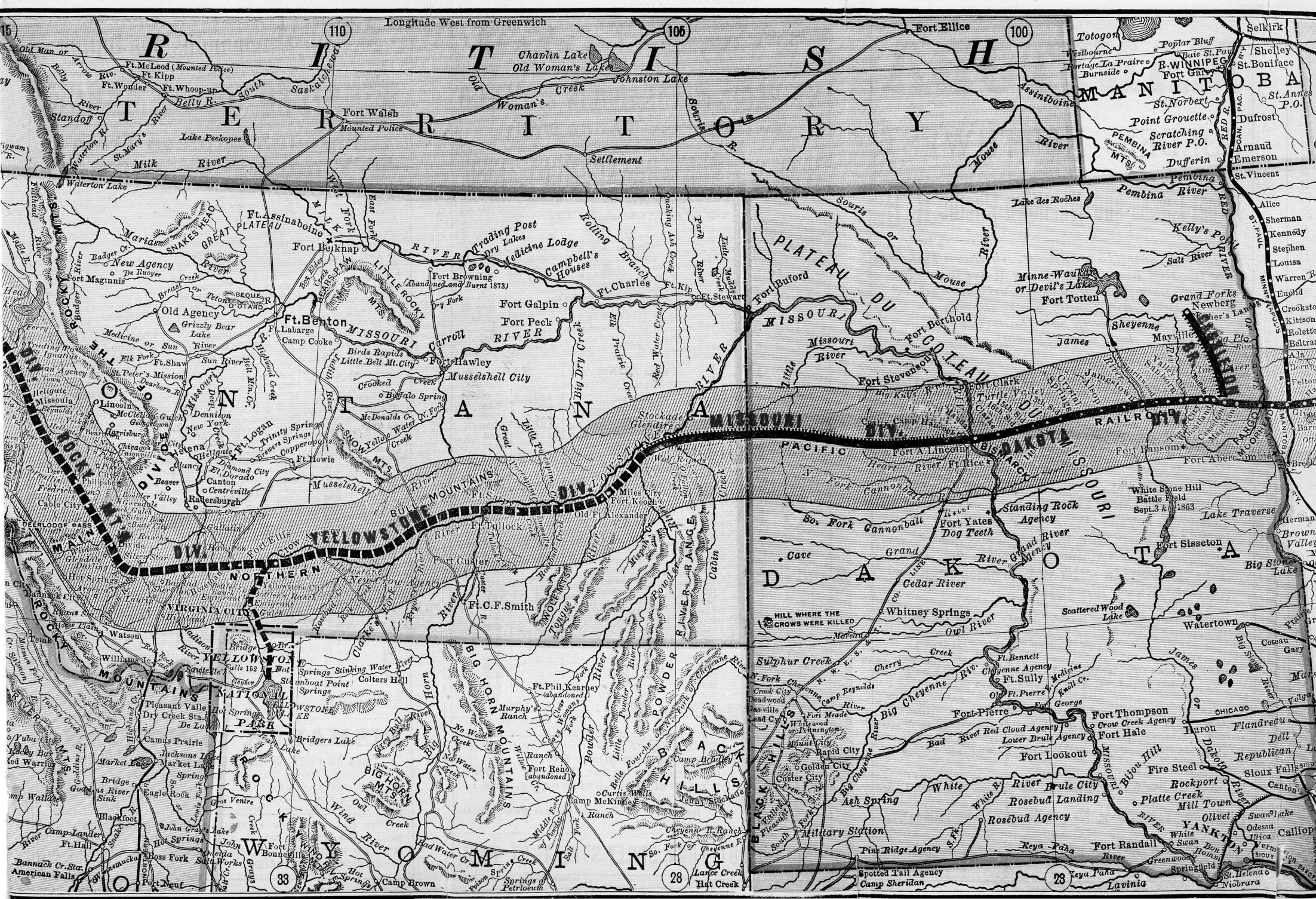
JAMES B. POWER, Land Commissioner N. P. R. R.,

St. Paul or Brainerd, Minn., or 54 Clark Street, Chicago, Ill.









Longitude West from Greenwich

110

106

100

R I T S H  
T E R R I T O R Y  
M A N I T O B A  
P E M B I N A M T S

Fort Walsh  
Fort Assinaboine  
Fort Benton  
Fort Peck  
Fort Galpin  
Fort Buford  
Fort Stevenson  
Fort Totten  
Fort Union  
Fort Snelling  
Fort Randall  
Fort Lincoln  
Fort Sully  
Fort Pierre  
Fort Thompson  
Fort Hancock  
Fort Union  
Fort Sully  
Fort Pierre  
Fort Thompson  
Fort Hancock

MISSOURI RIVER  
SNAKE HEAD  
GREAT PLATEAU  
MISSOURI PLATEAU  
SNAKE HEAD  
GREAT PLATEAU  
MISSOURI PLATEAU  
SNAKE HEAD  
GREAT PLATEAU

Yellowstone Plateau  
Big Horn Mountains  
Black Hills  
Souris River  
Moose River  
Cedar River  
Grand River  
White River  
Big Cheyenne River  
Red River  
Arkansas River  
Nebraska River  
Kansas River  
Missouri River  
Souris River  
Moose River  
Cedar River  
Grand River  
White River  
Big Cheyenne River  
Red River  
Arkansas River  
Nebraska River  
Kansas River

St. Louis  
St. Charles  
St. Joseph  
Omaha  
Council Bluffs  
Des Moines  
Sioux Falls  
Rapid City  
Black Hills  
Yellowstone Plateau  
Big Horn Mountains  
Black Hills  
Souris River  
Moose River  
Cedar River  
Grand River  
White River  
Big Cheyenne River  
Red River  
Arkansas River  
Nebraska River  
Kansas River

Fort Benton  
Fort Union  
Fort Snelling  
Fort Hancock  
Fort Union  
Fort Sully  
Fort Pierre  
Fort Thompson  
Fort Hancock  
Fort Union  
Fort Sully  
Fort Pierre  
Fort Thompson  
Fort Hancock

Yellowstone Plateau  
Big Horn Mountains  
Black Hills  
Souris River  
Moose River  
Cedar River  
Grand River  
White River  
Big Cheyenne River  
Red River  
Arkansas River  
Nebraska River  
Kansas River  
Missouri River  
Souris River  
Moose River  
Cedar River  
Grand River  
White River  
Big Cheyenne River  
Red River  
Arkansas River  
Nebraska River  
Kansas River

Fort Union  
Fort Sully  
Fort Pierre  
Fort Thompson  
Fort Hancock  
Fort Union  
Fort Sully  
Fort Pierre  
Fort Thompson  
Fort Hancock

Yellowstone Plateau  
Big Horn Mountains  
Black Hills  
Souris River  
Moose River  
Cedar River  
Grand River  
White River  
Big Cheyenne River  
Red River  
Arkansas River  
Nebraska River  
Kansas River  
Missouri River  
Souris River  
Moose River  
Cedar River  
Grand River  
White River  
Big Cheyenne River  
Red River  
Arkansas River  
Nebraska River  
Kansas River

Fort Union  
Fort Sully  
Fort Pierre  
Fort Thompson  
Fort Hancock  
Fort Union  
Fort Sully  
Fort Pierre  
Fort Thompson  
Fort Hancock



33

28

28



# MAP OF THE NORTHERN PACIFIC RAILROAD, AND CONNECTIONS.

Completed Road.   
Under Construction, to be Completed in 1880   
To be Constructed. 